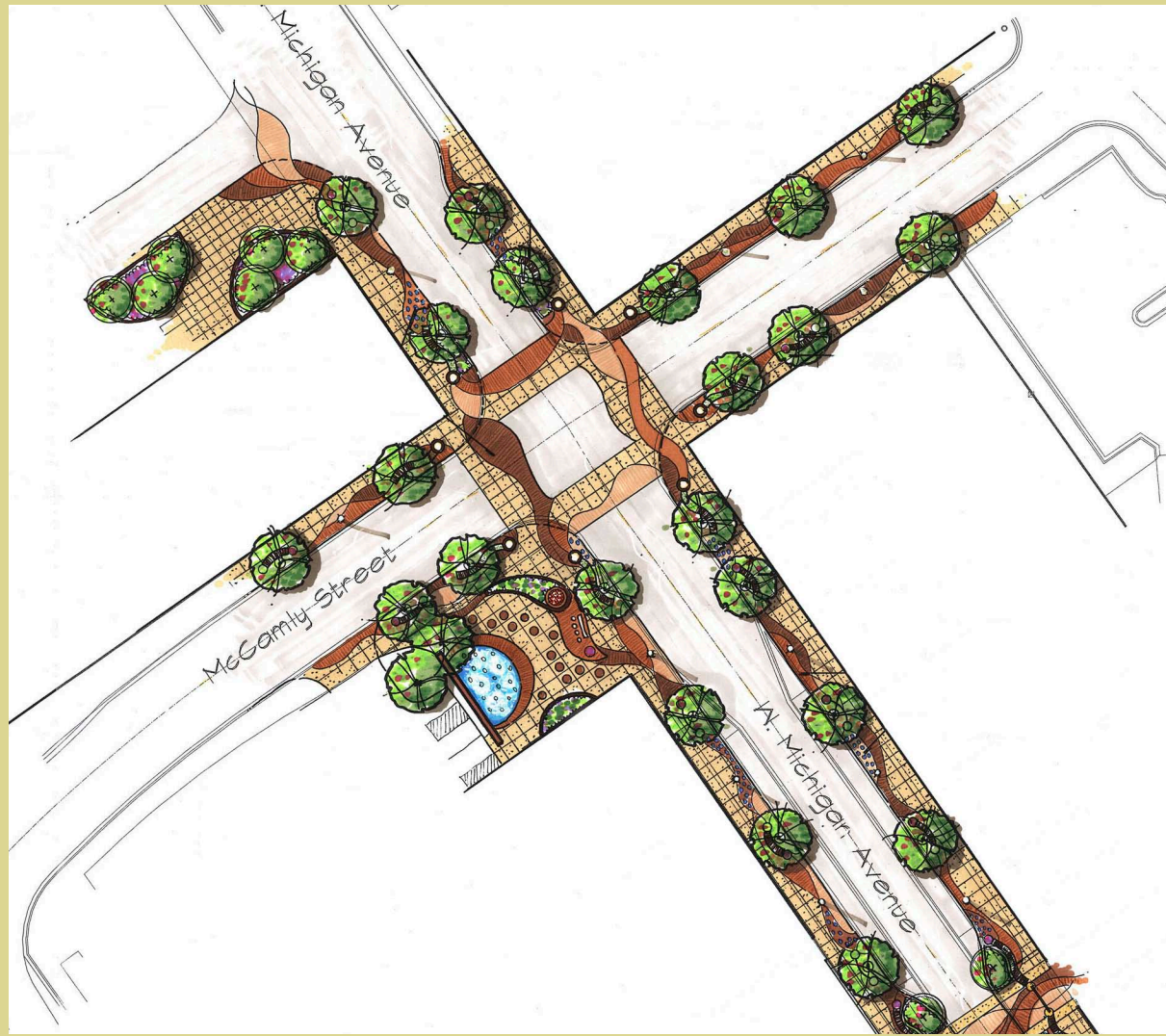


BATTLE CREEK DOWNTOWN TRANSFORMATION

Streetscape Concept: Water-History Theme



Welcome to a glimpse of Battle Creek's future

The streets reach out with the most popular theme portraying the city's rich water resources and unique history. This streetscape concept was made possible by those who openly shared their thoughts, experiences and hopes for the city.

The vision reflects a productive collaboration among citizens, downtown employers, merchants, economic developers, governmental representatives and non-profit organizations. They all brought forth hundreds of suggestions to form a design that will lead to a visually appealing and enjoyable downtown environment. Incorporating the public's top picks, landscape architects created a concept for longevity, compliance, cost, walkability, safety, sustainability, technology and entertainment.

BATTLE CREEK DOWNTOWN TRANSFORMATION

Streetscape Concept: Water-History Theme

Design

Beginning at the corner intersection of Michigan Avenue and Division Street (M-66), this concept represents the winding banks of the Battle Creek and Kalamazoo Rivers, as they flow east and west through the downtown. The pavement design illustrates water movement that is accented with curvilinear benches and ornamental ironwork. It provides areas for colorful plantings and sculptures that showcase the city's creativity and rich history.

Walkability

This streetscape focuses on the pedestrian experience. With pathways and sidewalks that connect to Battle Creek's urban environment, it creates a seamless walkable network that is comfortable, lively and safe. The sidewalks are designed to provide interest incorporating shade, seating, landscape, art and consideration is being given to the viability of a snow melt system which further encourages the walkability throughout the seasons.

Safety

Pedestrian lighting is a priority for downtown safety and creates a warm and inviting atmosphere. Light towers at the intersections announce the arrival into the downtown setting, as well as anchor planting and seating opportunities. Textural and artistic lighting are incorporated for all seasons and will provide dramatic and colorful interest. The public highly favored a more contemporary design for the pedestrian street lights and lighting opportunities for the bridges east of Michigan Avenue.

Sustainability

Mindful of the environment, the public insisted on a sustainable design for the community. The streetscape incorporates recycled materials and sustainable products, such as LED lighting. Street lighting will be dark sky-friendly, energy efficient and low maintenance. Vine covered screen walls in some areas will provide textural interest and shade. Benches will accommodate art or urban plantings. The city's existing storm system provides opportunities to catch rain for streetscape gardens. Trees will be alternately spaced 64 feet apart and provide shade and proportional scale for years of growth and enjoyment.

Technology & Entertainment

Large and small gathering spaces are incorporated within the design and at the corner of Michigan and McCamly, the community is encouraged to enjoy an interactive water feature, sit by a fireplace, access the internet in this WiFi zone, and enjoy the interactive performance wall. Visitors will be able to learn about the history of Battle Creek, as they enjoy the pictorial etchings within the plaza pavement.

Next Steps

The design team is completing the schematic design phase and is ready to begin the task of construction bid documents upon approval. The project is being evaluated for cost estimating purposes and preliminary construction logistics. All of the information generated will be reviewed by Battle Creek Unlimited and the City of Battle Creek for adherence to the design directions, as well as construction requirements.

The next phase of the design development will include the selection of materials and systems, utility coordination, further cost estimating and construction scheduling. The designers will submit images and data sheets for the project components for approval.

